

4035E/4035Esp  
4045E/4045Esp

> DIGITAL IMAGING SYSTEMS

**High**  
**performance**  
**digital imaging**  
**systems**



**Savin 4035E/4035Esp**  
**4045E/4045Esp**



**savin**®

# Intelligent Digital Technology And New

Every day, you face a paper blizzard – copies, prints, faxes and e-mails. And every day, it becomes more of a challenge to manage...until now. With the Savin 4035E/4045E Series, you will get – and stay – on top of document management. Featuring a design that enables you to specify exactly the type of system you need – from digital copying to network printing at 35/45 pages per minute, and scanning to super G3 faxing and LAN-Fax – the 4035E/4045E Series can effectively replace up to four pieces of office equipment, which saves working capital and frees office space.



## Hardcopy And Electronic Files Work Together

Today's documents are a mix of hardcopy and digital files, and making them work together seamlessly is an important task for the 4035E/4045E Series.

Thanks to a generous hard disk drive, the 4035E/4045E Series' **Document Server** efficiently organizes and manages your documents – paper scans, print jobs and fax/LAN-fax transmissions. And, stored documents are always available when they're needed – from the Control Panel or the desktop.

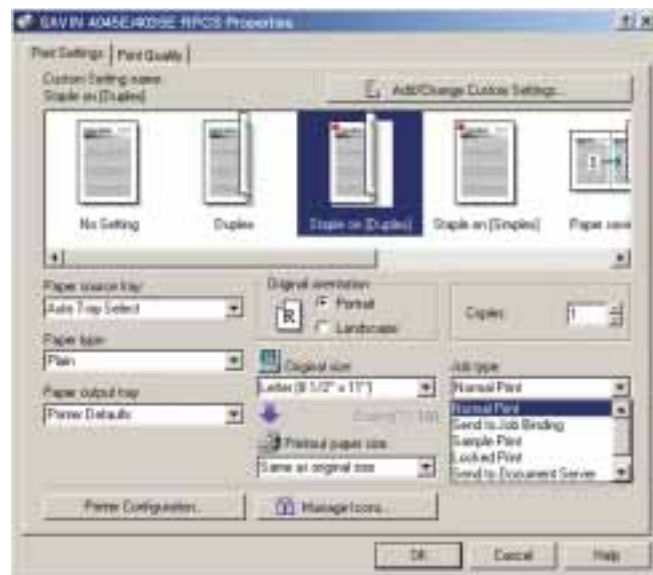
Use the Document Server to merge scanned hardcopy with electronic files – even those created in multiple applications – and create a completely new document. Or, store frequently accessed documents and print them when – and in what quantity – you need them. And, you can output documents via a variety of methods – print, re-fax or re-distribute them to networked PCs and e-mail addresses.

## Network Printing

Connect your 4035E/4045E and everyone in your workgroup gains access to all of the functions through their PC. Print finished documents – stapled or saddle stitched – including covers, paper designates and more, without leaving your desk.

## Network Scanning

The **Print/Scan Module** (optional on the 4035E/4045E) provides a convenient method of integrating hardcopy into your network. This enables easy document sharing along with a fast and cost-effective electronic distribution system.

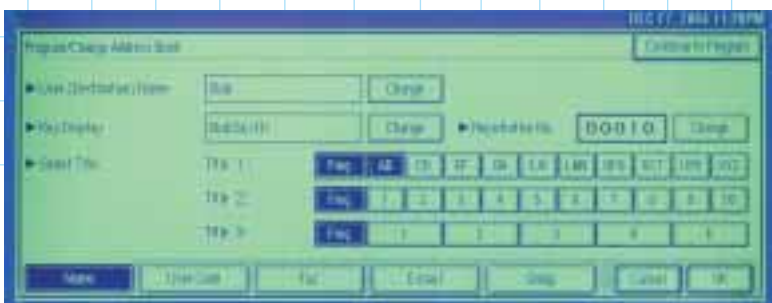


*Our unique Refined Print Command Stream (RPCS) Print Driver – a sophisticated Comprehensive Driver Interface, provides "one click" access to all output and finishing selections via clear graphic icons.*

# Network Connectivity, Customized For You



Select from up to 2,000 programmable destinations or enter e-mail addresses manually.



Manage all user address book functions from one location.



Incoming faxes are automatically saved to the system's hard drive. Fax documents can then be viewed, printed or downloaded from a browser using the Web Image Monitor Utility.

Serverless scanning requires no special software or delivery server, thereby eliminating added expense. What that means for you is the ability to:

- Scan, capture and deliver documents via embedded Scan to E-mail.
- Plug into your company's global e-mail address book with LDAP support from the control panel.
- Program up to 2,000 e-mail addresses or enter e-mail addresses manually at the control panel
- Scan and distribute documents via SMB/FTP protocols using your existing network infrastructure to securely deliver up to 2 GB files right to a shared folder or FTP server.

## Digital Copying

Walk-up users will appreciate easy access to a variety of advanced digital copying features – including Scan Once, Print Many, Automatic Image Rotation, Image Combination, Covers, Paper

Designate and more. And the 4035E/4045E Series' large, intelligently designed control panel makes every user an instant expert.

## Your Documents Are In Capable Hands

From start to finish the 4035E/4045E Series efficiently and carefully handles your important documents.

### Automatic Document Feeding

Swiftly scan up to 80 originals at one time – perfect for copy jobs consisting of large numbers of originals.

### Large, Versatile Paper Capacity

Access a variety of paper sizes – from statement to ledger – and paper types – including cover stock, colored paper and transparencies – at any given time.

### Trayless Duplexing

Whether you're copying, printing or receiving a fax, the 4035E/4045E Series' automatic duplex function cuts down on paper, storage and mailing costs.

## Leading Edge Fax

With the 4035E/4045E Series' Fax Option, your 4035E or 4045E becomes a powerful communications hub. You'll have access to sophisticated fax technology that includes ultra-fast transmission speeds, JBIG compression and multi-line communication. In addition, the copier-based design offers exceptional document handling capabilities including duplex transmission/reception, book faxing and the ability to receive faxes and transmission reports via e-mail.



Easily identify inbound faxes and keep them separated from print and copy output with the 1-Bin Tray option.

## Choose from a variety of professional finishing options.

		
<b>1,000-Sheet Finisher</b>	<b>Booklet/Saddle Stitch Finisher</b>	<b>Multi-Tray Finisher</b>

### *Paperless Faxing*

**Outbound LAN-Fax:** Conveniently send a fax right from your PC and deliver hardcopy faxes to the recipient's fax machine. Use the **Cover Editor** to create LAN-Fax cover pages with your company logo or slogan.

**Inbound LAN-Fax:** Automatically store incoming faxes into the system's hard drive for easy viewing with **Web Image Monitor**. E-mail notification tells you when a fax comes in, then go to Web Image Monitor to view, download or delete it. Or, have all faxes automatically forwarded to an administrator or directly to the recipient's e-mail address – a great feature for those who travel often!

### *Internet Faxing*

The T.37-compliant **Internet Faxing** lets you send hardcopy documents to recipients in hardcopy form or as a TIFF-F e-mail attachment, cutting your long distance and international communication costs. Mixed fax broadcasts can also be sent to a combination of recipients with e-mail addresses and fax numbers.

### *Security Options*

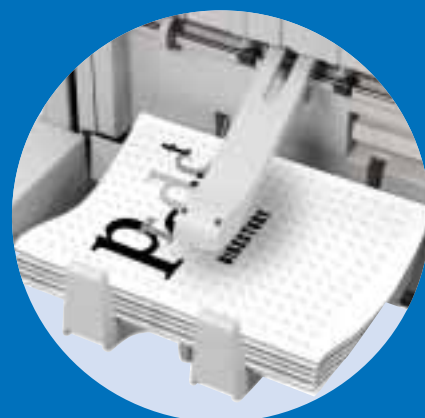
Handling sensitive and classified documents are easily managed with two security options for the 4035E/4045E Series. With the **Removable Hard Drive** option, the system's internal hard drive is mounted externally in a secure bay. The hard drive can then be unlocked, removed and stored in a secure location after processing classified information. To add an extra layer of security, an additional hard drive may be purchased to keep classified and unclassified information separated.

Another security option is the **Data-OverwriteSecurity System**. This option provides automatic overwriting of the information after each copy or print job. The data is overwritten three times so information cannot be easily retrieved or stolen. This is a cost effective way to implement a security strategy for environments with multiple systems.

The Removable Hard Drive and Data-OverwriteSecurity System may be used together to provide a multi-layered document security process.



Add the optional 1,000-Sheet Finisher and automatically staple documents in a variety of positions.



Eliminate costly outsourcing and produce professionally finished booklets and manuals in-house with the optional Booklet/Saddle Stitch Finisher.



Separate print output from copy output with the optional 2,500-Sheet Multi-Tray Finisher.

**savin**  
4035E/4035Esp  
4045E/4045Esp



# Savin 4035E/4035Esp/4045E/4045Esp



## Smart Software For Better Device Management

Manage scanned, faxed, copied or printed documents remotely with Web Image Monitor. Any document stored in the Document Server's memory can be managed, searched for or retrieved from the system's control panel, or by launching Savin's handy web-based utility, Web Image Monitor, using a standard web browser.

Remotely monitor the system status and job log, available paper and toner supply, and program fax numbers and e-mail addresses from your computer.

## Design One That's Right For You

Getting the perfect 4035E/4045E Series is simple – with a variety of configurations available, you're sure to find the one for you.

## *Savin 4035Esp/4045Esp*

For a connected document imaging and management strategy, choose the 4035Esp/4045Esp. With standard network printing and scanning, the 4035Esp/4045Esp are smart additions to your network. Plus, you can add Super G3 faxing and LAN-Fax as the need arises.

## *Savin 4035E/4045E*

If your current needs are primarily walk-up copying, the 4035E/4045E are ideal. At 35 (4035E) and 45 (4045E) images per minute, each system offers advanced digital copying functionality, outstanding image quality and versatile paper handling capabilities. As your needs grow, it's easy to add network printing and scanning, Super G3 faxing and LAN-Fax.

## Good For The Environment

The 4045E/4045E Series features an environmentally friendly design, fully compliant with the Environmental Protection Agency's Energy Star Program. In addition, reduced ozone emissions and a newly designed toner that enhances image quality while reducing energy requirements ensure that your choice has a positive impact on the planet we share.

For more information contact your authorized Savin dealer.



[www.savin.com](http://www.savin.com)



# Savin

## 4035E/4035Esp

## 4045E/4045Esp

### COPIER & GENERAL SPECIFICATIONS

<b>Configuration</b>	Digital Copier
<b>Copy Process</b>	Dry electrostatic transfer
<b>Copy Resolution</b>	600 dpi
<b>Gray Scale</b>	256 levels
<b>Standard Memory Capacity</b>	64 MB RAM, 20 GB HDD
<b>Continuous Copy Speed</b>	35/45 cpm - letter size
<b>Copy Size</b>	Maximum: 11" x 17"; Minimum: 5.5" x 8.5"
<b>First Copy</b>	4.5/3.6 seconds (Internal Output Tray)
<b>Maximum Original Size</b>	11" x 17"
<b>Minimum Original Size</b>	5.5" x 8.5"
<b>Warm-up Time</b>	15/20 seconds
<b>Multiple Copying</b>	Up to 999
<b>Auto Duplex</b>	Standard Unlimited
<b>Standard Paper Capacity</b>	500 x 2 + 50 sheets Bypass Tray
<b>Total Paper Capacity</b>	3,550 sheets
<b>Standard Output Capacity</b>	500 sheets (Internal Tray)
<b>Zoom Range</b>	25% - 400% in 1% steps
<b>Enlargement</b>	121%, 129%, 155%, 200%, 400%
<b>Reduction</b>	93%, 85%, 78%, 73%, 65%, 50%, 25%
<b>Copy Paper Weight</b>	20 - 28 lb. Bond (Trays & LCT); 16 - 44 lb. Bond (Bypass Feed); 20 - 28 lb. Bond (Duplex)
<b>Dimensions (WxDxH)</b>	23.6" x 25.6" x 32.3"
<b>Weight</b>	200 lbs.
<b>Power Source</b>	120V, 60Hz, 15A
<b>Other Features</b>	Auto Paper Select, Auto Magnification, Series Copy, Combine Mode, Cover Insertion, OHP Slip Sheet, Negative/Positive, Center/Border Erase, Electronic Sorting, Paper Designate, Auto Tray Select, 100 User Codes (optional 500 max.), 10 Job Programs, Document Server (3,000 file capacity), Touch Screen Control Panel, 95% Duplex Productivity, Date Stamp, Page Number Stamp, Pre-set Stamp Background Numbering and User Stamp

### SCANNER SPECIFICATIONS (OPTIONAL)

<b>Scanning Speed</b>	52 SPM 36 SPM – TWAIN
<b>Resolution</b>	100/200/300/400/600 dpi
<b>Memory</b>	192 MB RAM shared with Copier (320 MB max.)
<b>Other Features</b>	Scan To E-Mail, Scan To File, Scan To Folder (SMB & FTP), Scan To In-Tray, Duplex and Halftone Scanning, LDAP with SMTP Authentication and POP before SMTP Authentication
<b>Interface</b>	NIB 10/100BaseT (standard), IEEE 1394 and 802.11b Wireless (optional)
<b>Destination List</b>	2,000 E-Mail Addresses, 100 Network Locations, Ad-hoc Scan To E-Mail, LDAP Search
<b>Protocol</b>	TCP/IP, POP, LDAP, SMB, SMTP, FTP
<b>NOS</b>	Win95/98, NT, 2000, Me, XP

### FAX SPECIFICATIONS (OPTIONAL)

<b>Compatibility</b>	Group 3
<b>Modem Speed</b>	33.6 Kbps
<b>Scanning Speed</b>	0.43 8.5" x 11" SEF/0.30 A4 LEF 40 8.5" x 11" SEF PPM/46 A4 LEF PPM
<b>Transmission Speed</b>	3 seconds
<b>Transmission/Reception Duplex</b>	Up to 11" x 17" Reception/Transmission
<b>Memory Capacity</b>	4 MB SAF, 8 MB page memory upgradeable to 28 MB SAF, 16 MB page memory
<b>Auto Dial</b>	500 Quick, 64 Groups Optional 1,200 Quick Dial or 2,000 Quick Dial
<b>Other Features</b>	Dual Access, Image Rotation, Reverse Order Printing, 1 Hour Backup, Book Transmission, Optional Memory, Optional JBIG, Simultaneous Operation of up to 3 Lines (G3), LAN-Fax Capability, Fax Forwarding to E-Mail and Internet Faxing (T.37) with SP version or with Network Scanning/Printing Kit installed

### PRINTER SPECIFICATIONS (OPTIONAL)

<b>Print Speed</b>	35/45 PPM
<b>Language</b>	PCL5e, PCL6, RPCS (standard) Adobe PostScript Level 3 (optional)
<b>Resolution</b>	600 dpi/300 dpi (PCL5e) 600 dpi (PCL6) 600 dpi/300 dpi/200dpi (RPCS) 600 dpi (PS Level 3)
<b>Memory Capacity</b>	64 MB + optional 128 MB or 256 MB required 20 GB HDD shared with copier
<b>CPU</b>	RM7065A, 300 MHz
<b>Drivers for PCL</b>	Windows 95/98/NT 4.0/2000/Me, XP
<b>Drivers for PS</b>	Windows 95/98/2000/Me, Macintosh
<b>Fonts</b>	PCL6 (5e + XL) & PCL5e PS3
<b>Font Management</b>	35 Intellifonts, 10 TrueType Fonts, 1 Bitmap Font, 136 Adobe Type 1 Fonts 136 PostScript Fonts
<b>Other Features</b>	SmartDeviceMonitor, Web Image Monitor, Desktop Binder V2 Lite
<b>Interface</b>	Secure Print, Sample Print Parallel, Ethernet (standard) Wireless, USB 2.0 (option)

### OPTIONS

Fax Option Type 2045e
Scanner/Printer Kit Type 2045e
One Bin Tray RT330 – 125-sheet capacity
Hand Set
SR790 Finisher (1,000-sheet) Stapler (50-sheet staple capacity)
SR880 Multi-Tray Finisher Stapler (50-sheet staple capacity)
SR890 Saddle Stitch Finisher (50-sheet staple capacity/15-sheet booklet staple)
2/3-Hole Punch Kit Type 1045 (requires Multi-Tray Finisher)
RT45 Large Capacity Tray (1,500 sheets)
PS530 Paper Bank (2 x 500 sheets)
Bridge Unit Type 2045
User Acct. Enhance Unit (max. 500 User Codes)



Savin Corporation Stamford, Connecticut 06904 ©2004 Savin Corporation.  
SAVIN® is a registered trademark of Savin Corporation.  
Windows® and Windows® 3.1/95/98/Me/NT4.0/2000/XP are registered trademarks of Microsoft Corporation.  
Macintosh®, Mac®OS and AppleTalk® are registered trademarks of Apple Computer, Inc. Adobe® and PostScript® are trademarks of Adobe Systems, Inc. PCL® is a registered trademark of Hewlett-Packard Company.  
RPCS™ is a trademark of Ricoh Company, Ltd. All other trademarks are the property of their respective owners.  
Product specifications subject to change without notice.  
Printed in U.S.A. on recycled paper. (S1902) 00M 3/04